

**CROSS**

**concrete flooring ltd.**

## **Agricultural Division**

**Specialists in Precast Concrete**

**In response to the EU Nitrates directive, Cross Concrete Flooring Ltd. launched a range of agricultural products.**

- **cattle slats**
- **multi purpose slats**
- **mixing slats**
- **single cubicles**
- **head to head cubicles**
- **precast beams**
- **drinkers**
- **feed bunkers**
- **pillar tops**

The above range of agricultural products are manufactured by Cross Concrete Flooring Ltd. to the highest possible standard and ensure comfort and hygiene for your livestock.

The Prestressed Division of Cross Concrete Flooring Ltd. manufacture and supply prestressed wall panels and prestressed passage slabs to offer the complete farm building solution.



**VISION • EXPERIENCE • ABILITY • AMBITION**


The logo for CROSS concrete flooring Ltd. features the letters 'C', 'R', 'O', 'S', 'S' in white, each enclosed within a dark red circle. These circles are arranged horizontally and are set against a grey trapezoidal background that tapers at the ends.

concrete flooring ltd.


## Specialists in Precast Concrete

Two images showing safety manhole slabs. The left image is a close-up of a grey precast concrete slab with a rectangular opening and a grid pattern. The right image shows a similar slab installed on a concrete surface, with a metal manhole lid partially open, revealing a grid insert.

Safety manhole slabs are available in different sizes to suit individual requirements. The safety manhole and mixing slats produced by Cross Concrete Flooring Ltd. have a standard opening of 1000mm x 850mm, which can accommodate a galvanised manhole lid or concrete slatted inserts and safety grid.

Two images showing support beams. The left image shows a long, narrow, grey precast concrete beam lying on a light-colored surface. The right image shows a stack of several similar beams, with wooden pallets visible underneath them.

Cross Concrete Flooring Ltd. manufacture and supply a range of 300mm x 300mm and 400mm x 300mm support beams. 300mm x 300mm typically span up to 3600mm and 400mm x 300mm up to 4800mm. All support beams are designed and made to order.

A large photograph showing a wide, rectangular precast concrete slab laid out on a gravel surface. The slab is composed of several smaller sections separated by expansion joints. In the foreground, there are rows of tilled soil, suggesting a farm or agricultural setting. The background features a blue sky with scattered white clouds and a line of trees.

*At the farm of Willard Steele and Sons, Coleraine*

Call us on: (028) 7130 1488 or Email: [technical@crossconcreteflooring.com](mailto:technical@crossconcreteflooring.com)

# Agricultural Division



*At the farm of Leslie and Richard Allison, Limavady.*

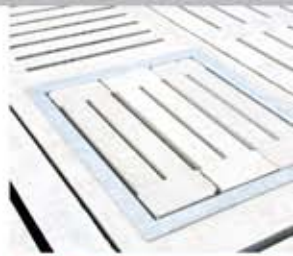
Cubicles are available in lengths up to 4.8m and widths to suit individual needs. Single and head to head cubicles are both available. Finishes can be steel mould to accept matting or with roughened grip finish. Recesses can be left for the fitting of galvanised cubicle dividers.



We stock high capacity drinkers suitable for dairy or beef enterprises.



Cross Concrete Flooring Ltd. carry a stock of Countryside Management pillar tops for immediate delivery or collection. The diameter is 900mm.



**CROSS**

concrete flooring ltd.

## Agricultural Division

### Specialists in Precast Concrete

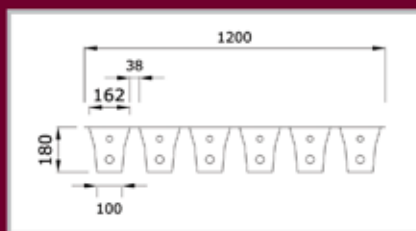
#### Technical Specifications

**180mm Deep**

Design Imposed loading to BS 5502 Part 22

800kg cattle

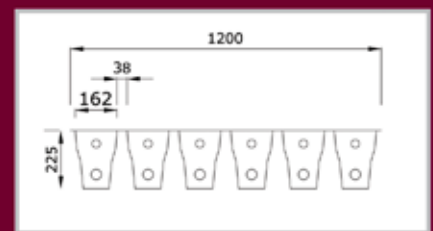
(Design for 4 ton axle load can be provided)

**225mm Deep**

Design Imposed loading to BS 5502 Part 22

800kg cattle

(Design for 4 ton axle load can be provided)



Depth of Slat	Length of Slat (mm)						
	3050	3200	3350	3650	3800	3950	4250
180mm	3050	3200	3350	3650	3800	3950	4250
225mm	4400	4600	4800	5000			

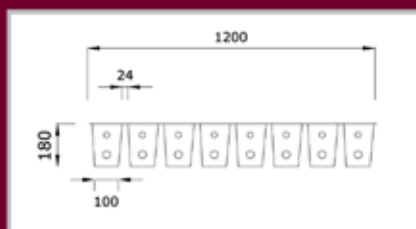
Cross Concrete Flooring Ltd. also manufacture multi purpose slats. These are suitable for calves, pigs and sheep. Multi purpose slats are 3950mm in length, 1200mm wide and 180mm deep.

Slats up to 3950mm are available as tractor load bearing.

**180mm Deep**

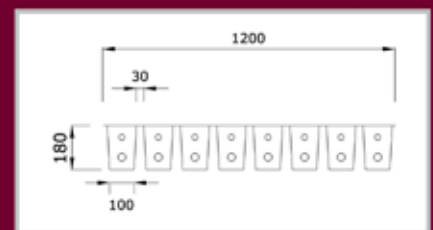
8 rib multi purpose gang

(24mm gap)

**180mm Deep**

8 rib multi purpose gang

(30mm gap)

**NORTHERN IRELAND**

1 Fawney Road,

Cross

Drumahoe

BT47 3NB

Tel: (028) 7130 1488

Fax: (028) 7130 2219

**REPUBLIC OF IRELAND**

Carrowreagh, Bridgend,

Co. Donegal

Tel: +353(0)7493 68241

Fax: +353(0)7493 86728

Mob: +353(0)868554795

Call us on: (028) 7130 1488 or Email: [technical@crossconcreteflooring.com](mailto:technical@crossconcreteflooring.com)